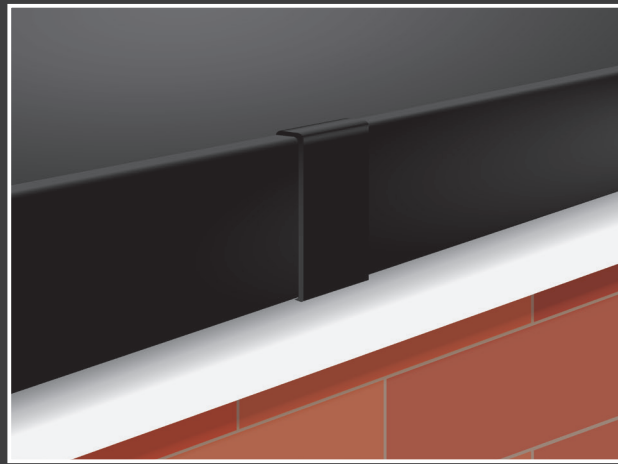


## What good looks like

Installed correctly, Raised Kerb Trim Joiners deliver a smart finish and long-term protection from the elements.



Integra Trim components are designed and manufactured for quick and easy installation.

In this guide, you'll learn how to prepare your project site and correctly install each Integra Trim component.

## How to install Integra Trim Raised Kerb Trim Joiners

Follow the steps in this guide to correctly use Joiner components to join two lengths of Integra Trim Raised Kerb Trim.

### Preparing for flat roof success

Ensure the Integra Trim Raised Kerb Trim Joiner components to be installed are clean, dry and free from dust and contaminants. Make sure to have the correct (and required quantities of) materials and tools, as listed below.

#### Materials required

- Integra Trim Raised Kerb Trim Joiners
- Superglue
- uPVC superglue activator

#### Tools required



SCISSORS OR  
CRAFT KNIFE



### Top Tips...

"Make sure to leave an 8mm gap between the two lengths of Raised Kerb Trim to be joined - this allows for any expansion of the lengths of Raised Kerb Trim."

# Step by step instructions to install Raised Kerb Trim Joiners

## Step 1

Make sure to leave an 8mm expansion gap between the two lengths of Raised Kerb Trim and position the foam sealant tape as in the diagram - one side cut to the same length as the trim and the other side overlapping underneath by at least 10mm.

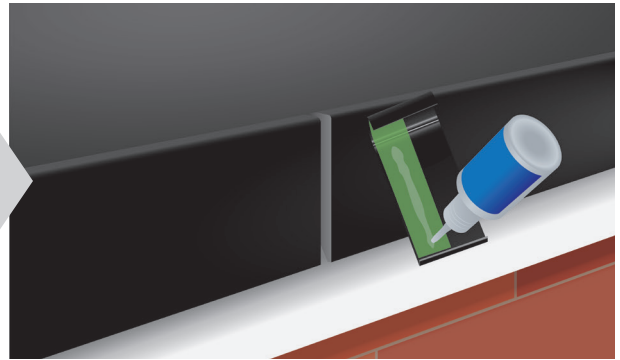


SCISSORS OR  
CRAFT KNIFE



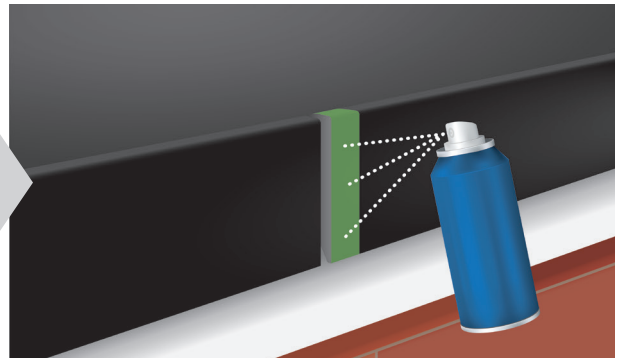
## Step 2

Apply superglue to ONE inside edge of the Raised Kerb Trim Joiner component.



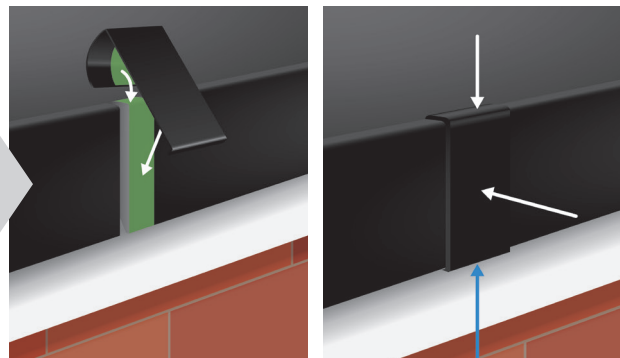
## Step 3

Apply uPVC superglue activator to the Raised Kerb Trim area where the superglued inside edge of the Raised Kerb Trim Joiner component is to be affixed.



## Step 4

Firmly press the Raised Kerb Trim Joiner component down and onto the area where the lengths of Raised Kerb Trim are to be joined, and hold in place until adhesion is solid.



Contact : 01306 400801 E: [info@flexiproof.co.uk](mailto:info@flexiproof.co.uk) W: [flexiproof.co.uk](http://flexiproof.co.uk)

FlexiProof Flat Roof Systems, Rugge Farm, Horsham Road, Beare Green, Dorking RH5 4PT