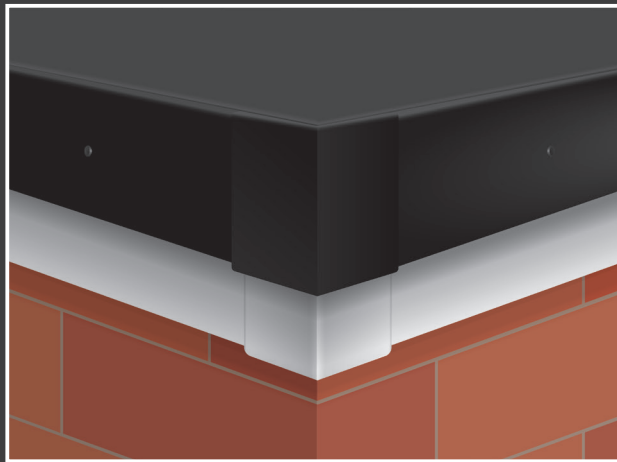


What good looks like

Installed correctly, Gutter Trim External Corners deliver a smart finish and long-term protection from the elements.



Integra Trim components are designed and manufactured for quick and easy installation.

In this guide, you'll learn how to prepare your project site and correctly install each Integra Trim component.

How to install Integra Trim Gutter Trim External Corners

Follow the steps in this guide to correctly use corner components to join two lengths of Integra Trim Gutter Trim where they meet on an external right angle.

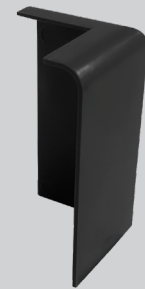
Preparing for flat roof success

Ensure the Integra Trim Gutter Trim External Corner components to be installed are clean, dry and free from dust and contaminants. Make sure to have the correct (and required quantities of) materials and tools as, listed below.

Materials required

- Integra Trim Gutter Trim External Corners
- Superglue
- uPVC superglue activator

No tools required



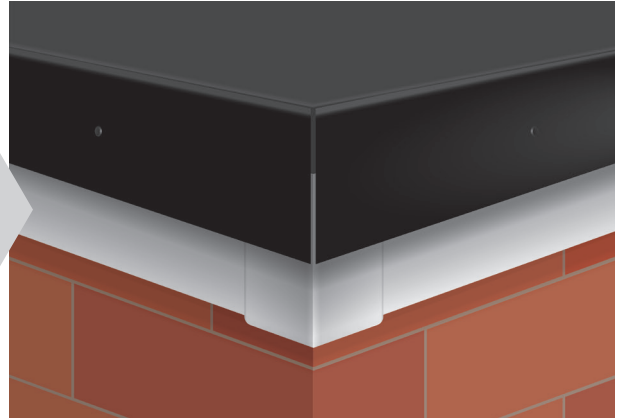
Top Tips...

"Make sure to leave a 4mm gap between the two lengths of Gutter Trim to be joined - this allows for any expansion of the lengths of Gutter Trim."

Step by step instructions to install Gutter Trim External Corners

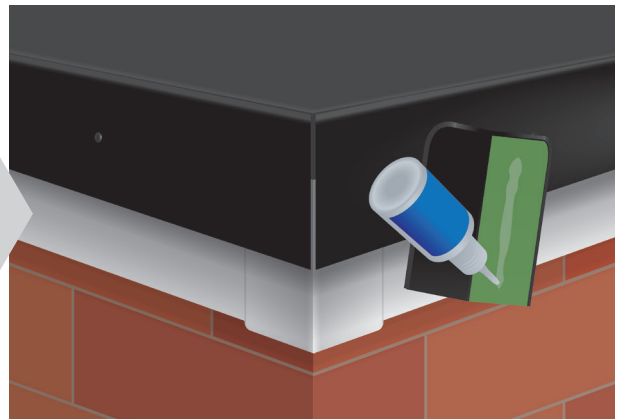
Step 1

Create an effective corner (ready for Gutter Trim External Corners to be fitted) by butting two lengths of Gutter Trim where they meet at an external right angle. Make sure to leave a 4mm expansion gap.



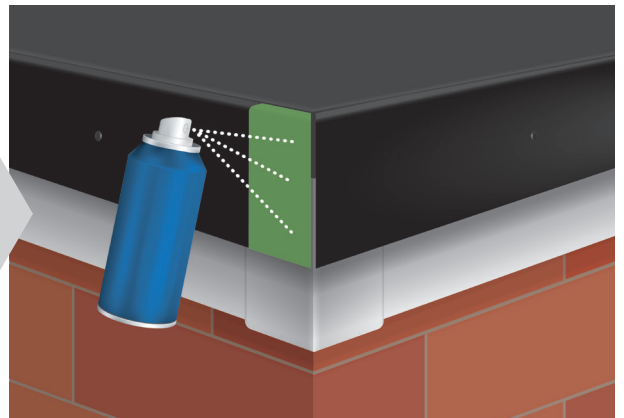
Step 2

Apply superglue to ONE inside edge of the Gutter Trim External Corner component. (Only one side is superglued to allow for any expansion of the joined lengths of Gutter Trim.)



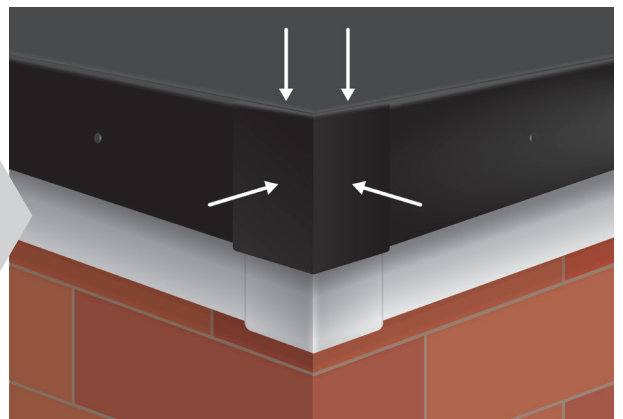
Step 3

Apply uPVC superglue activator to the Gutter Trim corner area where the superglued inside edge of the External Corner component is to be affixed.



Step 4

Firmly press the External Corner component down and into the Gutter Trim corner and hold in place until adhesion is solid.

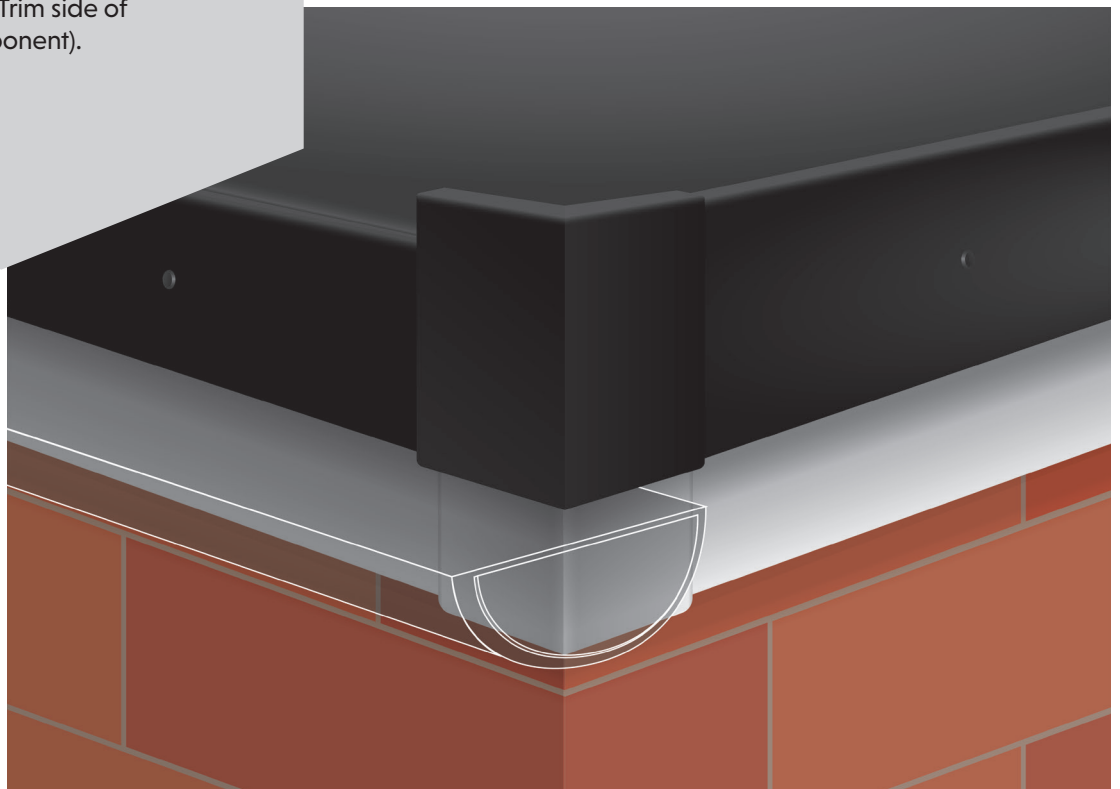
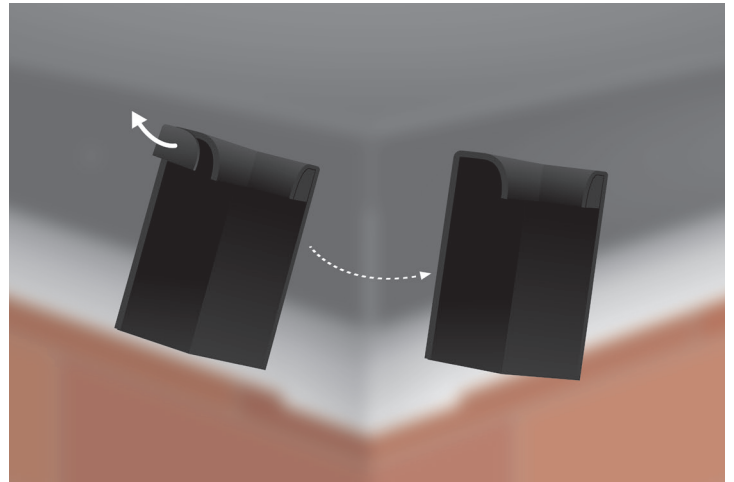


Bonus Step

How to join Integra Trim Gutter Trim to Integra Trim Raised Kerb Trim at an external corner.

Where Gutter Trim meets Raised Kerb Trim at an external corner, corner fittings incorporating both types of trim must be created.

Butt-join each length of trim as usual and use Raised Kerb Trim Corner components to join them following the steps above (making sure to only snap-out the Raised Kerb Trim side of the corner component).



Everything we do is focused on your flat roof project success.

From garages and garden rooms to extensions and large construction projects, FlexiProof EPDM membranes beautifully finish and protect flat roofs of all sizes.

Quickly and easily cold-applied, the complete FlexiProof flat roof system of EPDM membranes, edge trim components and specially-formulated adhesives enables installers, at all skill levels, to deliver outstanding results – every time!

Long term flat roof success.

Wind, rain or shine.

Together we've got it covered.



Contact : 01306 400801 E: info@flexiproof.co.uk W: flexiproof.co.uk

FlexiProof Flat Roof Systems, Rugge Farm, Horsham Road, Beare Green, Dorking RH5 4PT